


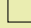

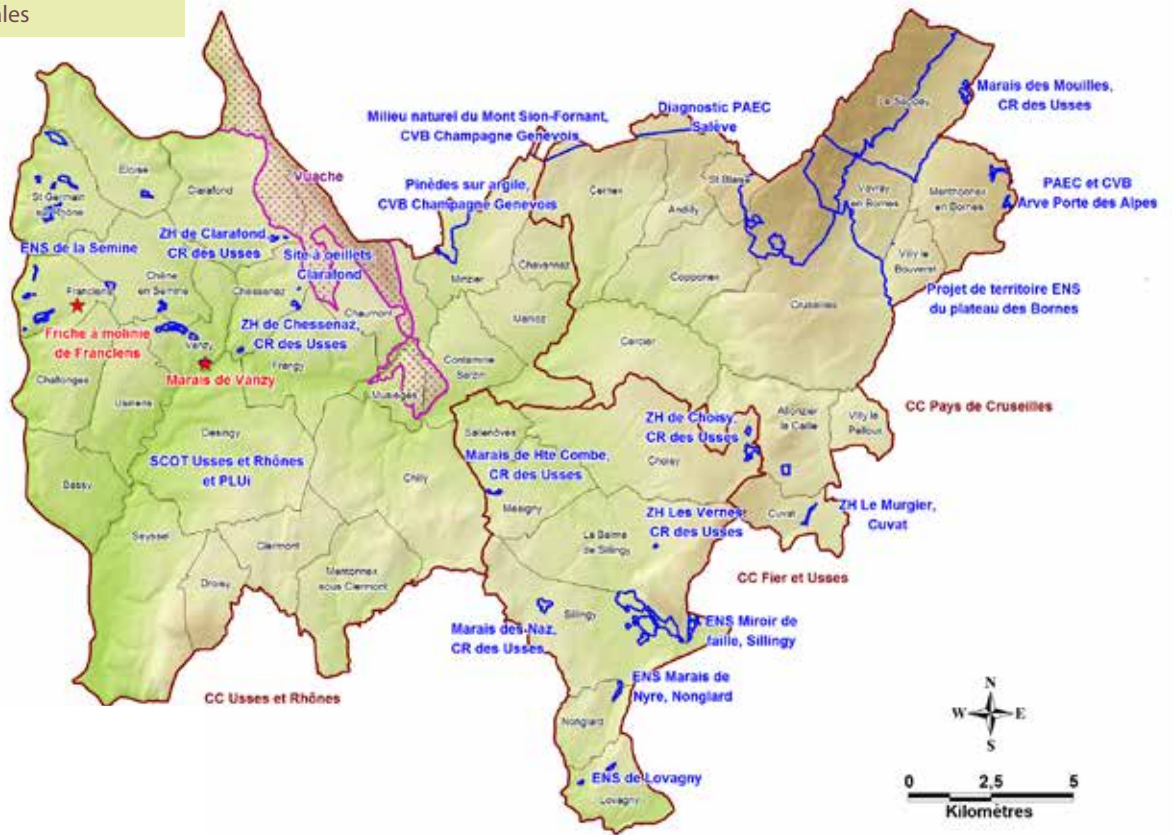



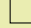



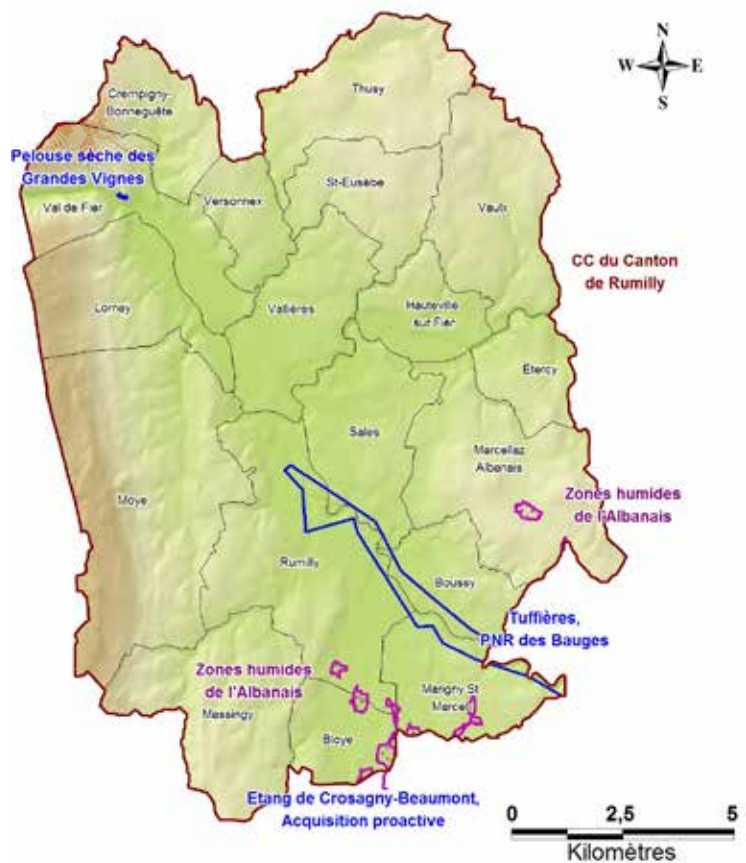
Territoire Usse et Bornes

-  Appui aux collectivités*
-  Natura 2000
-  Propriétés d'Asters
-  Limites communales
-  Limites intercommunales



Territoire de l'Albanais

-  Appui aux collectivités*
-  Natura 2000
-  Propriétés d'Asters
-  Limites communales
-  Limites intercommunales



Asters

CONSERVATOIRE D'ESPACES NATURELS DE HAUTE-SAVOIE

Les chiffres clés d'Asters

	2015		2016	
STRUCTURE				
Nombre de salariés	36		38	
SITES ET TERRITOIRES D'INTERVENTION				
Sites propriété d'Asters (surface ha)	11	(184)	13	(189)
Sites avec implication Asters :				
- en appui aux collectivités (surface ha)	36	(90 259)	44	(84 364)
- Réserves naturelles (surface ha)	9	(21 610)	9	(21 610)
Total	56	(112 053)	66	(106 163)
Espaces sur lesquels Asters est chargé d'une mission d'animation territoriale : DOCOB - Natura 2000 (surface ha)	17	(48 607)	20	(52 962)
VALORISATION DE L'ACTION				
Nombre d'animations réalisées (animations, visites, conférences, événements)	250		340	
Journées de maraudage	165		165	
Nombre de participants aux animations	8 300		9200	
Nombre de parutions dans la presse (articles, radio, TV)	520		525	
BUDGET CUMULÉ				
dont : Etat	939 801 €		993 542 €	
Communes et inter-communalités	285 298 €		425 653 €	
Région Auvergne Rhône-Alpes	222 018 €		201 023 €	
Conseil Départemental de Haute-Savoie	342 588 €		267 408 €	
Agence de l'Eau RMC	236 822 €		174 237 €	
Union Européenne	134 861 €		167 199 €	
Autres partenariats	259 720 €		218 292 €	



84 route du Viéran
P.A.E de Pré-Mairy
74370 PRINGY

Tél 04 50 66 47 51
Fax 04 50 66 47 52

asters@asters.asso.fr

www.asters.asso.fr

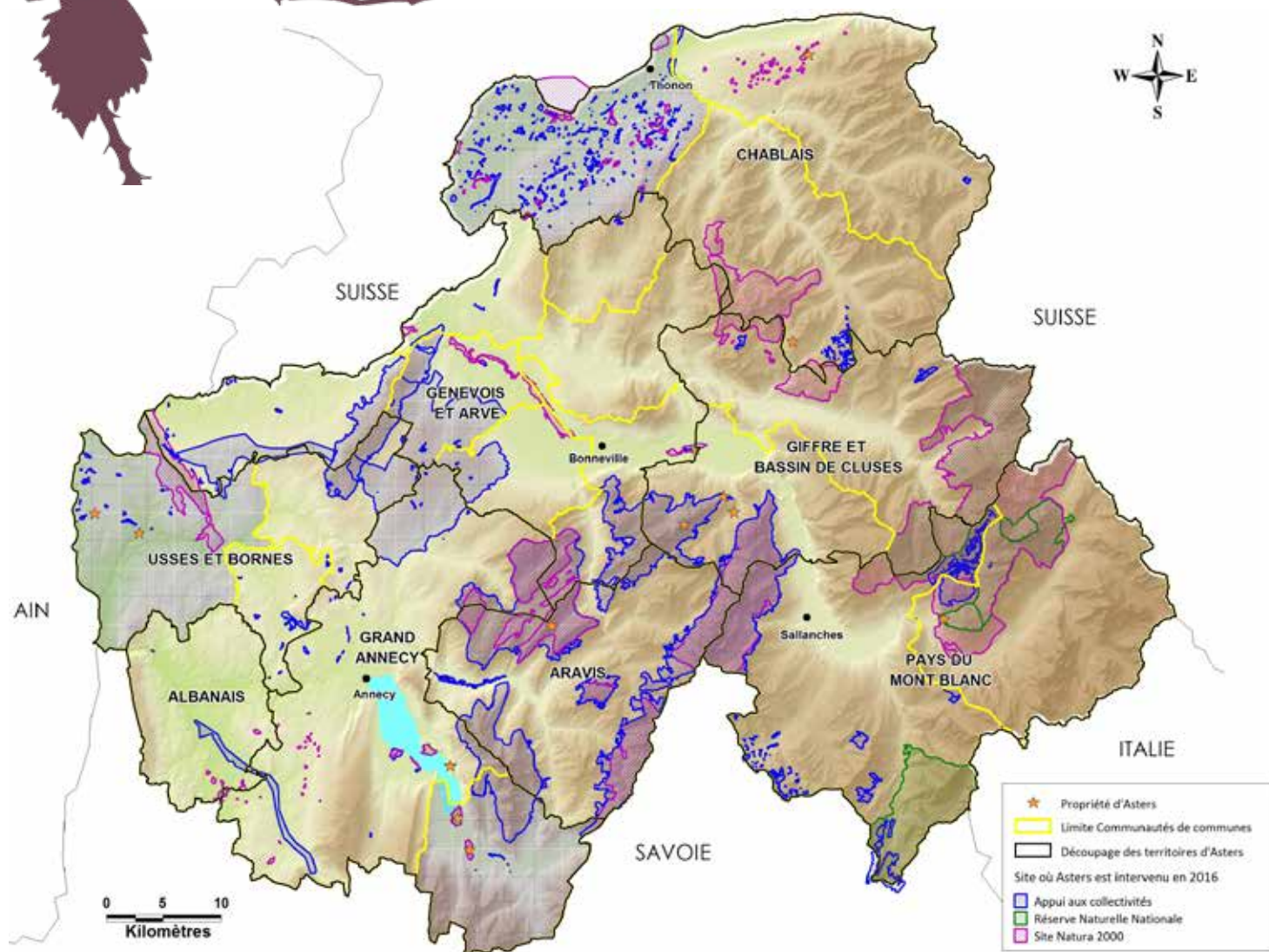
Nos grands partenaires financiers :



Asters




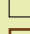

CONSERVATOIRE D'ESPACES NATURELS DE HAUTE-SAVOIE

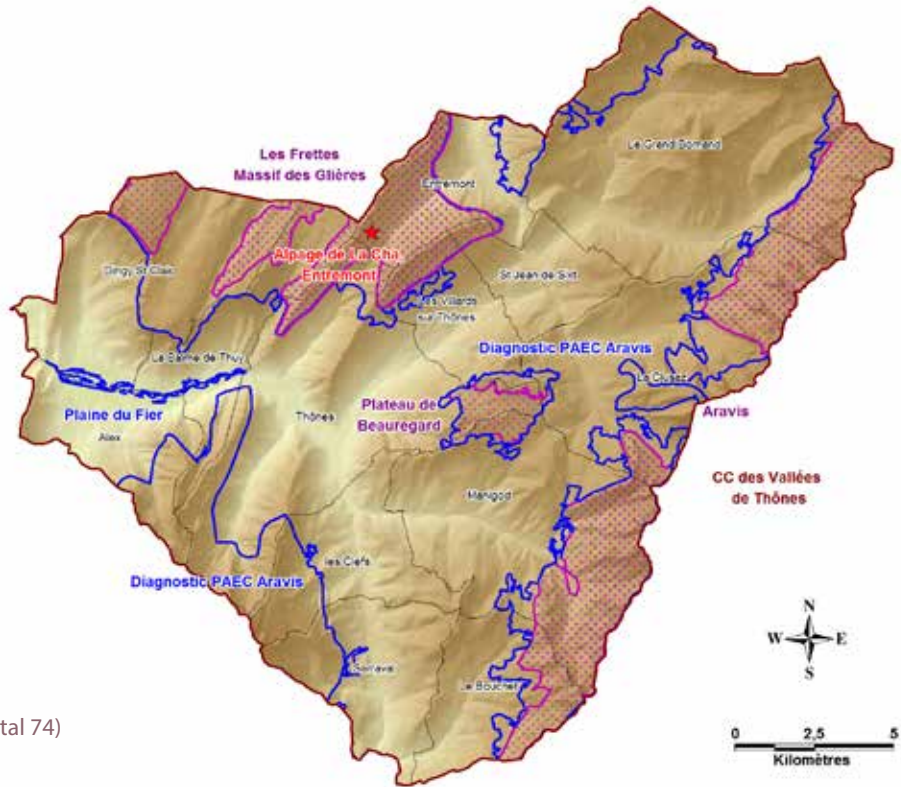
RAPPORT D'ACTIVITE 2016 SUPPLEMENT CARTOGRAPHIQUE



Ce document cartographique, supplément du rapport d'activités annuel, présente de manière territorialisée l'action d'Asters sur le département.

Territoire des Aravis






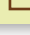
-  Appui aux collectivités*
-  Natura 2000
-  Propriétés d'Asters
-  Limites communales
-  Limites intercommunales



*LEXIQUE :

- CC : Communauté de Communes
- CR : Contrat de Rivière
- CVB : Contrat Vert et Bleu
- ENS : Espace Naturel Sensible (Conseil Départemental 74)
- MC : Mesure Compensatoire
- PAEC : Projet Agro-Environnemental et Climatique
- PLUi : Plan Local d'Urbanisme intercommunal
- ZH : Zone Humide





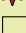

Territoire du Bassin Annécien

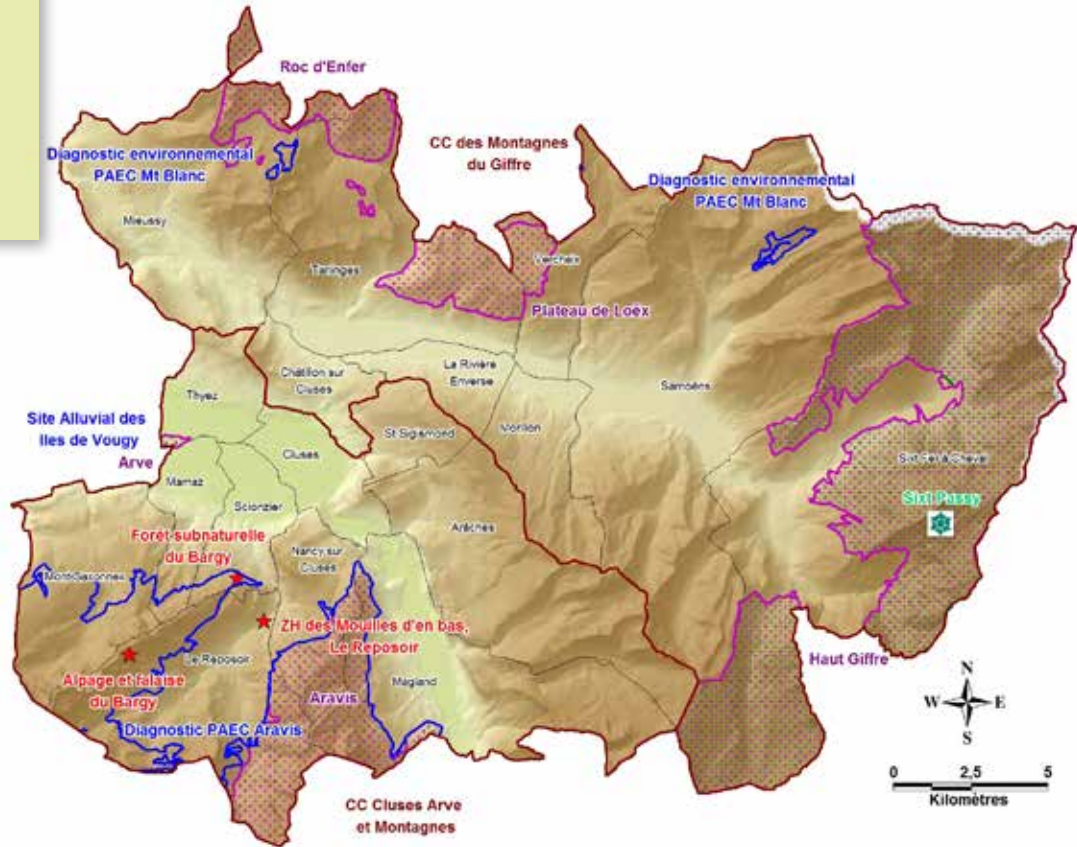
-  Appui aux collectivités*
-  Natura 2000
-  Réserve Naturelle Nationale
-  Propriétés d'Asters
-  Limites communales
-  Limites intercommunales



Territoire du Giffre et du Bassin de Cluses









-  Appui aux collectivités*
-  Natura 2000
-  Réserve Naturelle Nationale
-  Propriétés d'Asters
-  Limites communales
-  Limites intercommunales



Territoire du Pays du Mont Blanc





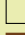



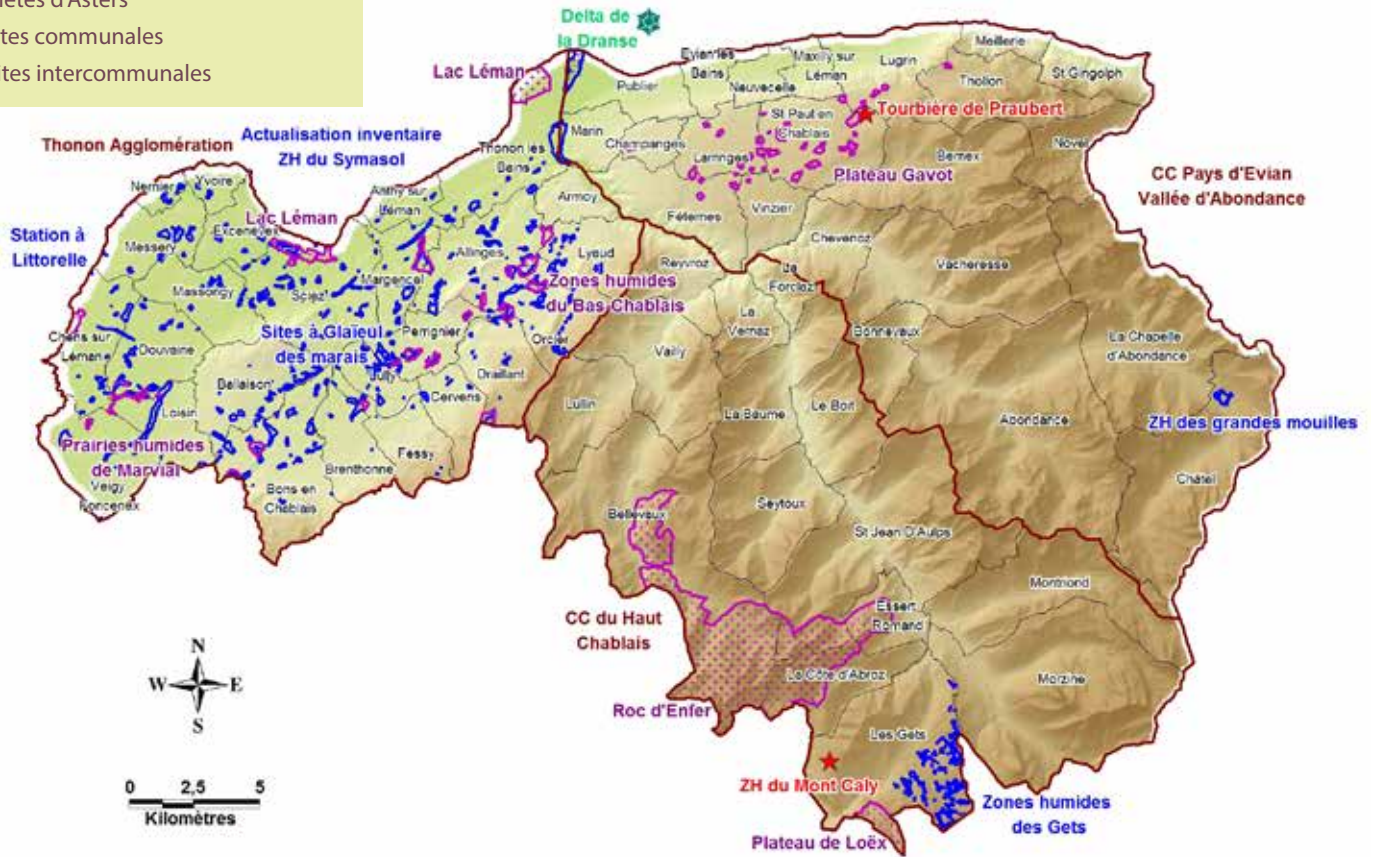
-  Appui aux collectivités*
-  Natura 2000
-  Réserve Naturelle Nationale
-  Propriétés d'Asters
-  Limites communales
-  Limites intercommunales



Territoire du Chablais




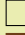



-  Appui aux collectivités*
-  Natura 2000
-  Réserve Naturelle Nationale
-  Propriétés d'Asters
-  Limites communales
-  Limites intercommunales



Territoire du Genevois et de l'Arve



-  Appui aux collectivités*
-  Natura 2000
-  Propriétés d'Asters
-  Limites communales
-  Limites intercommunales

